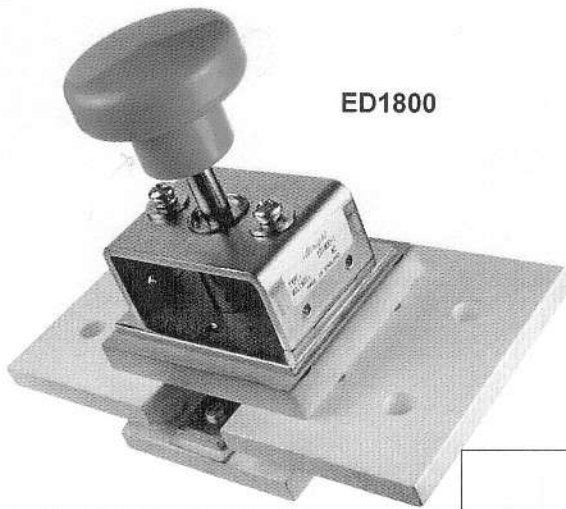




# ED1200 & ED1800 Battery Disconnecting Switches



ED1800

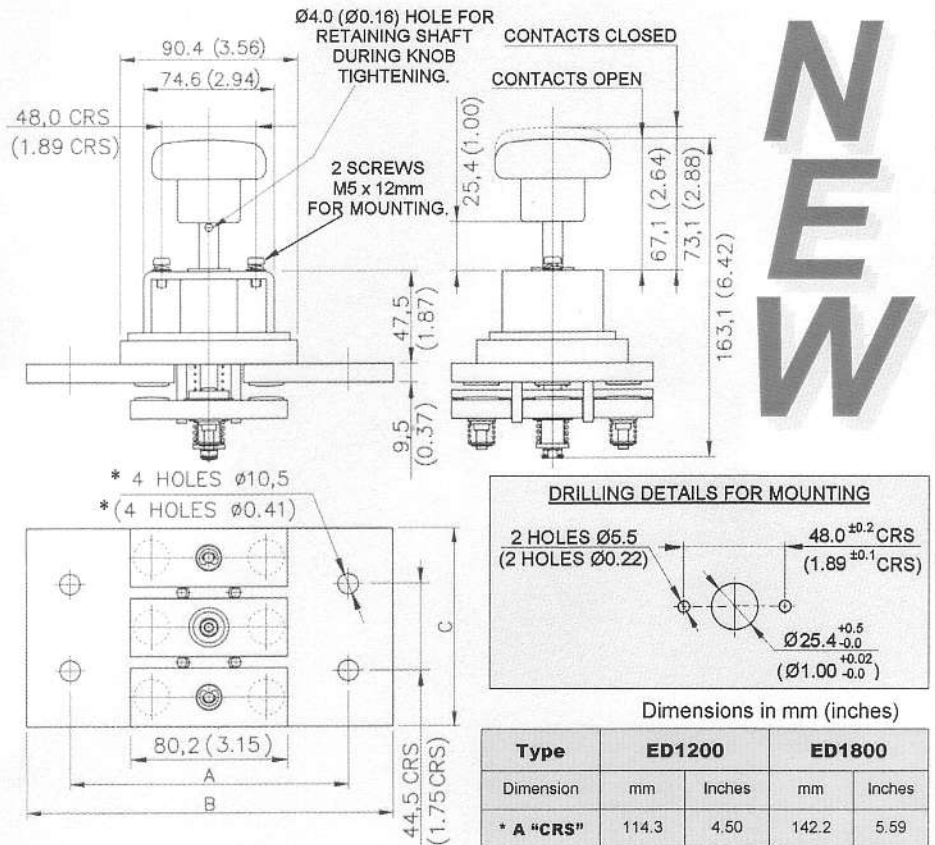
*Albright* International announces the introduction of two new Emergency Battery Disconnecting Switches: **The ED1200 & The ED1800.**

These switches have been designed for use with high current battery powered systems such as are found in Telecommunication Power Distribution Units.

They have paralleled double breaking contacts with silver alloy tips which are weld resistant, hard wearing and have excellent conductivity.

Mounting of the ED1200 & ED1800 can be either by using the main terminal busbars or by means of the two M5 screws on the frame of the switches (mounting brackets not essential).

## ED1200 & ED1800 DIMENSIONED DRAWING



### PERFORMANCE DATA

#### Thermal current Rating (100%):

ED1200:	1200 Ampere
ED1800:	1800 Ampere

#### Typical Overload Currents that can be ruptured (Resistive Loads):

ED1200:	1800 Amperes at 60V D.C.
ED1800:	2700 Amperes at 60V D.C.

#### Maximum Recommended Contact Voltages:

60V D.C.

#### Typical Voltage Drop across Contacts when new at maximum rated load:

20 - 50mV

#### Mechanical Life:

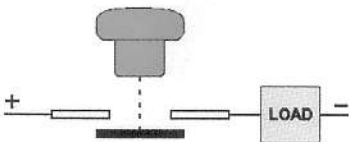
>10,000

#### Weights

ED1200:	2000 grams
ED1800:	2750 grams

**BUSBAR SIZE...** The minimum copper busbar size for the maximum continuous current rating is shown in the table.

### Electrical Schematic



**Please Note:** All Performance data given here should be used as a guide only. Some de-rating or variation from these figures may be necessary according to type and application.

Type	ED1200		ED1800	
	mm	Inches	mm	Inches
<b>BUSBAR</b>	76 x 9.5	3.0 x 0.374	101.5 x 9.5	4.0 x 0.374

Type	ED1200		ED1800	
Dimension	mm	Inches	mm	Inches
* A "CRS"	114.3	4.50	142.2	5.59
* B	152.4	6.00	187.3	7.37
* C	76.2	3.00	101.6	4.00

\* Busbar fixing holes and dimensions A, B & C may be tailored to suit users requirements.



*Albright* International Limited  
125 Red Lion Road, Surbiton  
Surrey KT6 7QS, England  
Tel: +44 (0) 20 8390 5357  
Fax: +44 (0) 20 8390 1927  
Web Site: www.albright.co.uk

